

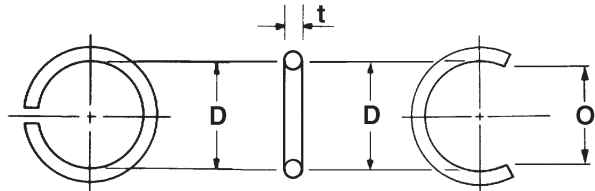
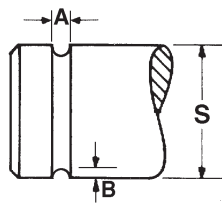


ROUND SECTION EXTERNAL

0.125" to 3.00"

Standard Material
Carbon Spring Steel

Obtainable in
Bronze, Beryllium Copper,
and Stainless Steel



Closed Gap Round Wire XRC Type										Open Gap Round Wire XRO Type (All dimensions identical to XRC except for gap opening dimensions)				
PART NUMBER	SHAFT DIAMETER		Ring Dimensions				GROOVE DIMENSION		APPROX. Wt. LB/ 1000 PCS.	PART NUMBER	Gap Dimensions			APPROX. Wt. LB/ 1000 PCS.
	S (frac)	S (dec)	Thickness	D max.	D Center	D Min.	A Width	B Depth			O Max.	O Center	O Min.	
XRC 311	1/8	.125	.022	0.110	0.107	0.103	0.024	0.007	.04	XRO 411	0.097	0.094	0.091	0.03
XRC 312	5/32	.156	.022	0.140	0.136	0.132	0.024	0.007	.05	XRO 412	0.123	0.119	0.116	0.04
XRC 313	3/16	.188	.022	0.172	0.167	0.162	0.024	0.007	.07	XRO 413	0.152	0.147	0.143	0.05
XRC 314	7/32	.219	.022	0.202	0.196	0.190	0.024	0.007	.09	XRO 414	0.178	0.173	0.167	0.06
XRC 315	1/4	.250	.029	0.230	0.223	0.216	0.031	0.009	.15	XRO 415	0.203	0.197	0.191	0.1
XRC 3155	9/32	.281	.029	0.260	0.252	0.244	0.031	0.009	.17	XRO 4155	0.229	0.222	0.215	0.12
XRC 316	5/16	.312	.022	0.296	0.287	0.278	0.024	0.007	.11	XRO 416	0.261	0.253	0.245	0.07
XRC 317	5/16	.312	.035	0.288	0.279	0.271	0.037	0.011	.27	XRO 417	0.254	0.246	0.239	0.18
XRC 318	3/8	.375	.029	0.353	0.342	0.332	0.031	0.009	.22	XRO 418	0.322	0.312	0.303	0.14
XRC 319	3/8	.375	.043	0.345	0.335	0.324	0.045	0.013	.50	XRO 419	0.304	0.295	0.286	0.33
XRC 320	7/16	.438	.035	0.412	0.402	0.391	0.037	0.011	.38	XRO 420	0.363	0.354	0.345	0.26
XRC 321	7/16	.438	.051	0.402	0.392	0.382	0.053	0.016	.82	XRO 421	0.355	0.346	0.337	0.53
XRC 322	1/2	.500	.043	0.468	0.456	0.445	0.045	0.013	.66	XRO 422	0.412	0.402	0.391	0.44
XRC 323	1/2	.500	.059	0.458	0.447	0.435	0.061	0.018	1.25	XRO 423	0.404	0.394	0.384	0.82
XRC 324	9/16	.562	.045	0.529	0.516	0.503	0.047	0.014	.81	XRO 424	0.467	0.455	0.444	0.53
XRC 325	9/16	.562	.062	0.518	0.505	0.492	0.064	0.019	1.55	XRO 425	0.457	0.446	0.434	1.02
XRC 326	5/8	.625	.051	0.587	0.572	0.558	0.053	0.016	1.15	XRO 426	0.518	0.505	0.492	0.75
XRC 327	5/8	.625	.071	0.575	0.561	0.546	0.073	0.022	2.26	XRO 427	0.507	0.494	0.482	1.48
XRC 328	11/16	.688	.051	0.649	0.633	0.617	0.053	0.016	1.27	XRO 428	0.572	0.558	0.543	0.83
XRC 329	11/16	.688	.071	0.637	0.621	0.605	0.073	0.022	2.48	XRO 429	0.562	0.548	0.534	1.68
XRC 330	3/4	.750	.059	0.706	0.688	0.671	0.061	0.018	1.85	XRO 430	0.623	0.607	0.592	1.21
XRC 331	3/4	.750	.085	0.690	0.673	0.656	0.087	0.026	3.89	XRO 431	0.609	0.594	0.579	2.55
XRC 332	13/16	.812	.059	0.769	0.750	0.731	.061	.018	2.00	XRO 432	0.678	0.661	0.644	1.31
XRC 333	13/16	.812	.085	0.753	0.734	0.715	.087	.026	4.21	XRO 433	0.664	0.647	0.631	2.76
XRC 334	7/8	.875	.071	0.823	0.802	0.782	0.073	0.022	3.13	XRO 434	0.726	0.708	0.690	2.05
XRC 335	7/8	.875	.100	0.804	0.784	0.764	0.102	0.031	6.28	XRO 435	0.709	0.691	0.674	4.12
XRC 336	15/16	.938	.071	0.885	0.863	0.841	0.073	0.022	3.35	XRO 436	0.780	0.761	0.741	2.2
XRC 337	15/16	.938	.100	0.867	0.845	0.824	0.102	0.031	6.72	XRO 437	0.764	0.745	0.726	4.31
XRC 338	1	1.000	.085	0.938	0.915	0.891	0.087	0.026	5.26	XRO 438	0.827	0.806	0.786	3.45
XRC 339	1	1.000	.118	0.917	0.894	0.871	0.12	0.037	10.01	XRO 439	0.809	0.789	0.769	6.57
XRC 340	1-1/16	1.063	.085	1.000	0.980	0.960	0.087	0.026	6.86	XRO 440	0.882	0.864	0.847	4.5
XRC 341	1-1/16	1.063	.118	0.979	0.959	0.940	0.12	0.037	10.61	XRO 441	0.863	0.846	0.828	6.96
XRC 342	1-1/8	1.125	.100	1.051	1.030	1.009	0.102	0.031	8.00	XRO 442	0.927	0.908	0.890	5.25
XRC 343	1-1/8	1.125	.130	1.034	1.013	0.993	0.132	0.04	13.67	XRO 443	0.912	0.894	0.876	8.97
XRC 344	1-3/16	1.188	.100	1.114	1.092	1.069	0.102	0.031	8.44	XRO 444	0.983	0.963	0.944	5.54
XRC 345	1-3/16	1.188	.130	1.096	1.074	1.052	0.132	0.04	14.40	XRO 445	0.967	0.948	0.928	9.45
XRC 346	1-1/4	1.250	.118	1.164	1.141	1.117	0.12	0.037	12.40	XRO 446	1.027	1.006	0.986	7.77
XRC 347	1-1/4	1.250	.140	1.150	1.127	1.104	0.142	0.044	17.57	XRO 447	1.014	0.994	0.973	11.53
XRC 348	1-5/16	1.312	.118	1.226	1.202	1.177	0.12	0.037	13.00	XRO 448	1.081	1.059	1.038	8.53
XRC 349	1-5/16	1.312	.140	1.212	1.188	1.164	0.142	0.044	18.41	XRO 449	1.069	1.048	1.026	12.08
XRC 350	1-3/8	1.375	.130	1.281	1.255	1.230	0.132	0.04	16.56	XRO 450	1.130	1.107	1.085	10.87
XRC 351	1-3/8	1.375	.156	1.264	1.239	1.213	0.158	0.049	24.01	XRO 451	1.115	1.093	1.070	15.75
XRC 352	1-7/16	1.438	.130	1.344	1.317	1.290	0.132	0.04	17.31	XRO 452	1.185	1.161	1.138	18.36
XRC 353	1-7/16	1.438	.156	1.326	1.300	1.273	0.158	0.049	25.06	XRO 453	1.170	1.147	1.123	16.43
XRC 354	1-1/2	1.500	.140	1.398	1.370	1.342	0.142	0.044	20.95	XRO 454	1.233	1.208	1.184	13.75
XRC 355	1-1/2	1.500	.172	1.378	1.350	1.323	0.174	0.054	31.86	XRO 455	1.215	1.191	1.166	20.91
XRC 356	1-5/8	1.625	.140	1.522	1.492	1.461	0.142	0.044	22.63	XRO 456	1.342	1.315	1.288	14.85
XRC 357	1-5/8	1.625	.172	1.502	1.472	1.442	0.174	0.054	34.41	XRO 457	1.325	1.299	1.272	22.58
XRC 358	1-3/4	1.750	.172	1.626	1.594	1.561	0.174	0.054	36.96	XRO 458	1.434	1.405	1.377	24.25
XRC 359	1-3/4	1.750	.203	1.608	1.576	1.544	0.205	0.063	51.85	XRO 459	1.418	1.390	1.361	34.04
XRC 360	2	2.000	.203	1.855	1.818	1.781	0.205	0.063	58.93	XRO 460	1.636	1.603	1.571	38.67
XRC 361	2	2.000	.232	1.837	1.800	1.764	0.234	0.072	77.38	XRO 461	1.620	1.588	1.555	50.79
XRC 362	2-1/4	2.250	.203	2.103	2.061	2.019	0.205	0.063	66.03	XRO 462	1.855	1.818	1.781	43.34
XRC 363	2-1/4	2.250	.232	2.085	2.043	2.002	0.234	0.072	86.65	XRO 463	1.839	1.802	1.765	56.88
XRC 364	2-1/2	2.500	.232	2.332	2.285	2.239	0.234	0.072	95.89	XRO 464	2.057	2.016	1.975	62.89
XRC 365	2-1/2	2.500	.250	2.321	2.275	2.228	0.252	0.078	111.60	XRO 465	2.047	2.006	1.965	73.22
XRC 366	3	3.000	.232	2.827	2.771	2.714	0.234	0.072	114.40	XRO 466	2.494	2.444	2.394	75.09
XRC 367	3	3.000	.250	2.816	2.760	2.703	0.252	0.078	133.20	XRO 467	2.483	2.433	2.384	87.32

Tolerance on "t" (thickness) dimensions are as follows:
.022 to .250 sizes ± .002

