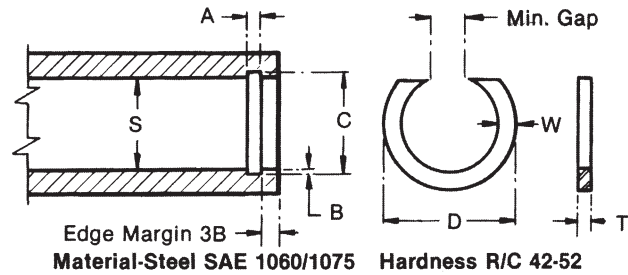




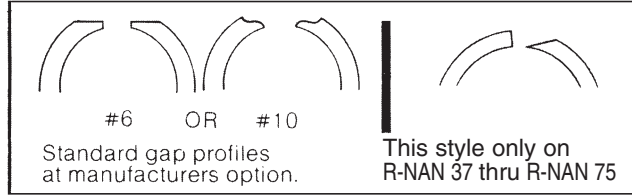
**INTERNAL
RETAINING
RINGS**

**Applicable Housing
0.375" to 2.688"**

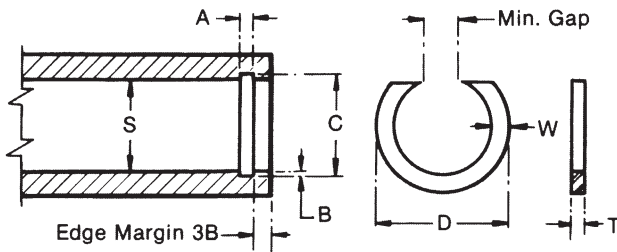
Standard Material
Carbon Spring Steel



Material-Steel SAE 1060/1075 Hardness R/C 42-52



PART NUMBER	HOUSING			RING				GROOVE				FREE GAP		RING THRUST CAPACITY LBS.
	DIAMETER S			FREE DIAMETER		WIRE SECTION		DIA.		WIDTH A	NOM. DEPTH B	MIN.	MAX.	
	Frac. inch	Dec. inch	mm	D inches	Tol. inches	W ±.005	T ±.002	C	Tol.					
NAN37	3/8	.375	9.53	.400	+.020	.035	.025	.395		.028	.010	.125	.218	250
NAN43	7/16	.438	11.12	.467	-.000	±.003		.462		+003 -.000				300
NAN50	1/2	.500	12.70	.530		.040		.524			.012			470
NAN51	-	.512	13.00	.542		±.003		.536						480
NAN56	9/16	.562	14.27	.600			.035	.590		.039	.014			510
NAN62	5/8	.625	15.88	.670	+.025	.048		.657		+003 -.000	.016	.187	.344	620
NAN68	11/16	.688	17.48	.733	-.000	±.003		.720	±.003					700
NAN75	3/4	.750	19.05	.799				.786			.018			750
NAN77	-	.777	19.74	.827		.062		.813						1020
NAN81	13/16	.812	20.62	.867		±.003		.852			.020			1090
NAN87	7/8	.875	22.23	.934				.919		.046	.022			1130
NAN90	-	.901	22.88	.961		.078	.042	.945		+003 -.000				1260
NAN93	15/16	.938	23.82	1.003		±.003		.986			.024	.281	.438	1360
NAN100	1	1.000	25.40	1.070				1.052						1470
NAN102	-	1.023	25.98	1.094				1.075			.026			1500
NAN106	11/16	1.062	26.97	1.134		.093		1.114						1780
NAN112	1 1/8	1.125	28.58	1.202	+.031	±.003		1.181			.028			1880
NAN118	1 1/8	1.188	30.17	1.270	-.000			1.248			.030			1990
NAN125	1 1/4	1.250	31.75	1.337		.109		1.314		.056	.032			2090
NAN131	1 5/16	1.312	33.32	1.404		±.003	.050	1.380		+003 -.000	.034	.375	.562	2200
NAN137	1 3/8	1.375	34.93	1.472				1.447			.036			2300
NAN143	1 7/16	1.438	36.52	1.535				1.510						2460
NAN145	-	1.456	36.08	1.557		.125		1.532			.038			2490
NAN150	1 1/2	1.500	38.10	1.607		±.005		1.576	±.005					2560
NAN156	1 9/16	1.562	39.67	1.668				1.642			.040			3060
NAN162	1 5/8	1.625	41.28	1.736		.141		1.709			.042			3190
NAN165	-	1.653	41.99	1.765		±.005		1.737						3240
NAN168	1 11/16	1.688	42.87	1.804				1.776			.044	.437	.687	3370
NAN175	1 3/4	1.750	44.45	1.870				1.842		.068	.046			3510
NAN181	1 13/16	1.812	46.02	1.933			.062	1.904		+004 -.000				3640
NAN185	-	1.850	47.00	1.975				1.946			.048			3710
NAN187	1 7/8	1.875	47.63	2.000		.156		1.971						3760
NAN193	1 15/16	1.938	49.22	2.068		±.005		2.038						3870
NAN196	1 31/32	1.968	49.99	2.098				2.068			.050			3935
NAN200	2	2.000	50.80	2.131	+.046			2.100						4000
NAN206	2 1/16	2.062	52.37	2.197	-.000			2.166			.052			4380
NAN212	2 1/8	2.125	53.98	2.260				2.229						5140
NAN218	2 3/16	2.188	55.55	2.331				2.296			.054	.500	.750	5470
NAN225	2 1/4	2.250	57.15	2.393		.171		2.358		.086				5630
NAN231	2 5/16	2.312	58.72	2.459		±.005	.078	2.424		+005 -.000	.056			5790
NAN237	2 3/8	2.375	60.33	2.523				2.487	±.006					5950
NAN244	-	2.440	61.98	2.592				2.556			.058			6270
NAN250	2 1/2	2.500	63.50	2.653				2.616						6350
NAN253	2 17/32	2.531	64.28	2.688		.187		2.651			.060			6510
NAN256	2 9/16	2.562	65.07	2.726		±.005		2.686		.103				8400
NAN262	2 5/8	2.625	66.67	2.790			.093	2.750		+005 -.000	.062	.562	.812	8650
NAN268	2 11/16	2.688	68.27	2.856				2.816						8800



**Applicable Housing
2.717" to 10.000"**

Standard Material
Carbon Spring Steel



NAN

**INTERNAL
RETAINING
RINGS**

**Material-
Steel SAE 1060/1075
Hardness
R/C 42-52**



#6 OR #10

Standard gap profiles
at manufacturers option.

PART NUMBER	HOUSING			RING				GROOVE			FREE GAP		RING THRUST CAPACITY LBS.	
	DIAMETER S			FREE DIAMETER		WIRE SECTION		DIA.		WIDTH A	NOM. DEPTH B	MIN.		MAX.
	Frac. inch	Dec. inch	mm	D inches	Tol. inches	W ±.005	T ±.002	C	Tol.					
NAN271	-	2.717	68.83	2.882	+0.046 -0.000			2.842			.064	.562	.812	8875
NAN275	2 ³ / ₄	2.750	69.85	2.918				2.878		.103				8950
NAN281	2 ¹³ / ₁₆	2.813	71.45	2.985		.187	.093	2.945		+0.005 -0.000	.066			9100
NAN283	-	2.834	72.00	3.006				2.966						9250
NAN287	2 ⁷ / ₈	2.875	73.00	3.056				3.011			.068			9400
NAN300	3	3.000	76.20	3.181	+.062			3.136				.625	.875	9550
NAN306	3 ⁹ / ₁₆	3.062	77.78	3.247	-.000			3.202						10470
NAN312	3 ¹ / ₈	3.125	79.38	3.311				3.265			.070			10690
NAN315	3 ⁵ / ₃₂	3.156	80.16	3.342		.218		3.296						10800
NAN325	3 ¹ / ₄	3.250	82.55	3.442				3.394						11120
NAN334	-	3.346	85.00	3.539				3.490			.072			11450
NAN346	3 ¹⁵ / ₃₂	3.469	88.00	3.663				3.613						11870
NAN350	3 ¹ / ₂	3.500	88.90	3.700				3.648						11970
NAN354	-	3.543	90.00	3.745				3.691	±.006		.074	.718	1.062	12120
NAN356	3 ⁹ / ₁₆	3.562	90.47	3.766	+.078			3.710						12190
NAN362	3 ⁵ / ₈	3.625	92.08	3.831	-.000			3.773		.120				12380
NAN375	3 ³ / ₄	3.750	95.25	3.962			.109	3.902		+0.005 -0.000	.076			12600
NAN387	3 ⁷ / ₈	3.875	98.42	4.089				4.027			.078			12820
NAN393	3 ¹⁵ / ₁₆	3.938	100.00	4.156		.250		4.094						13230
NAN400	4	4.000	101.60	4.221				4.156						13690
NAN412	4 ¹ / ₈	4.125	104.77	4.355				4.285						14110
NAN425	4 ¹ / ₄	4.250	107.95	4.485				4.410			.080			14540
NAN433	-	4.330	110.00	4.565	+.093			4.490						14960
NAN443	4 ⁷ / ₁₆	4.436	112.69	4.670	-.000			4.596				.875	1.312	15170
NAN450	4 ¹ / ₂	4.500	114.30	4.744				4.664			.082			15390
NAN462	4 ⁵ / ₈	4.625	117.48	4.875				4.795			.085			15830
NAN475	4 ³ / ₄	4.750	120.65	5.011		.281		4.926			.088			16250
NAN500	5	5.000	127.00	5.265				5.180			.090			17110
NAN525	5 ¹ / ₄	5.250	133.35	5.530				5.435			.092			20590
NAN537	5 ³ / ₈	5.375	136.53	5.660				5.565		.139	.095			21110
NAN550	5 ¹ / ₂	5.500	140.00	5.796	+.125	.312	.125	5.696	±.007	+0.006 -0.000	.098	1.000	1.500	21790
NAN575	5 ³ / ₄	5.750	146.05	6.050	-.000			5.950			.100			22570
NAN600	6	6.000	152.40	6.309				6.204			.102			23550
NAN625	6 ¹ / ₄	6.250	158.75	6.568				6.458			.104			29420
NAN650	6 ¹ / ₂	6.500	165.00	6.832				6.712		.174	.106			30610
NAN662	6 ⁵ / ₈	6.625	168.27	6.975	+.156	.343	.156	6.845		+0.006 -0.000		1.125	1.812	31400
NAN675	6 ³ / ₄	6.750	171.45	7.100	-.000			6.970			.110			32640
NAN700	7	7.000	177.80	7.350				7.220						34850
NAN725	7 ¹ / ₄	7.250	184.15	7.630				7.500						38060
NAN750	7 ¹ / ₂	7.500	190.50	7.890		.375		7.750			.125	1.375	2.250	39450
NAN800	8	8.000	203.20	8.400				8.250	±.008					41960
NAN825	8 ¹ / ₄	8.250	209.55	8.665		.437		8.540			.145			43320
NAN850	8 ¹ / ₂	8.500	215.90	8.915	+.187			8.790		.209		1.625	2.500	44710
NAN875	8 ³ / ₄	8.750	222.25	9.205	-.000	.187		9.080		+0.006 -0.000				48900
NAN900	9	9.000	228.60	9.455				9.330						49740
NAN905	-	9.055	230.00	9.509		.500		9.384			.165			50050
NAN950	9 ¹ / ₂	9.500	241.30	9.955				9.830				1.750	2.625	52520
NAN984	9 ²⁷ / ₃₂	9.840	250.00	10.295				10.170						53780
NAN1000	10	10.000	254.00	10.455				10.330						55400