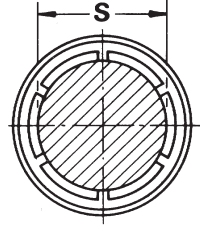
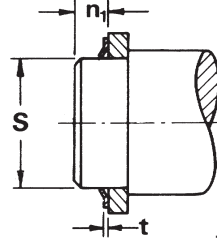
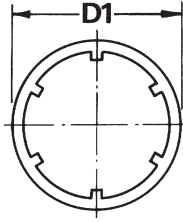


0.093" to 1.002"

Standard Material
Carbon Spring Steel

Standard Finish
Phosphate and oil

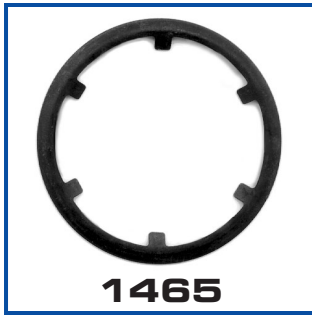


**"PUSH-ON"
EXTERNAL**

† Thrust load calculations see page 5

PART NUMBER	SHAFT			RING				APPROX Wt. LB / 1000 PCS.	Tc+ (lb.f)	
	DIAMETER S			OUTSIDE DIAMETER		THICKNESS				
	min. (inch)	max. (inch)	fraction ~	D1 inches	Tol. inches	t inches	Tol. inches			n ₁ (min)
1405-9	.093	0.095	3/32	0.250		.010		.040	0.09	13
1405-12	.124	0.126	1/8	0.325		.010		.040	0.14	20
1405-15	.155	0.157	5/32	0.356		.010	±.001	.040	0.17	25
1405-18	.187	0.189	3/16	0.387		.010		.040	0.20	35
1405-21	.218	0.220	7/32	0.418		.010		.040	0.21	35
1405-24	.239	0.241	-	0.460	±.005	.015	±.002	.060	0.35	40
1405-25	.249	0.251	1/4	0.450		.010		.040	0.23	40
1405-31	.311	0.313	5/16	0.512		.010	±.001	.040	0.26	45

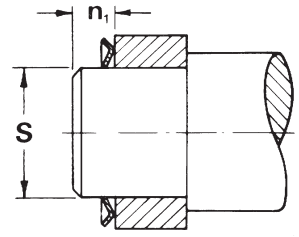
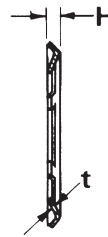
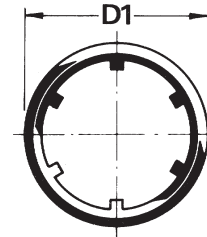
PART NUMBER	SHAFT			RING				APPROX Wt. LB / 1000 PCS.	Tc+ (lb.f)	
	DIAMETER S			OUTSIDE DIAMETER		THICKNESS				
	min. (inch)	max. (inch)	fraction ~	D1 inches	Tol. inches	t inches	Tol. inches			n ₁ (min)
1405-37	.374	0.376	3/8	0.575		.010	±.001	.040	0.27	45
1405-43	.437	0.439	7/16	0.638	±.005	.015		.060	0.47	50
1405-50	.498	0.502	1/2	0.750		.015		.060	0.72	50
1405-56	.560	0.564	9/16	0.812		.015		.060	0.75	50
1405-62	.623	0.627	5/8	0.875		.015	±.002	.060	0.82	50
1405-75	.748	0.752	3/4	1.000	±.010	.015		.060	0.97	55
1405-87	.873	0.877	7/8	1.125		.015		.060	1.10	60
1405-100	.998	1.002	1	1.250		.015		.060	1.20	65



0.091" to 1.005"

Standard Material
Carbon Spring Steel

Standard Finish
Phosphate and oil



**"PUSH-ON"
EXTERNAL
HEAVY DUTY**

† Thrust load calculations see page 5

PART NUMBER	SHAFT			RING						APPROX Wt. LB / 1000 PCS.	Tc+ (lb.f)	
	DIAMETER S			OUTSIDE DIAMETER		RING HEIGHT		THICKNESS				
	min. (inch)	max. (inch)	fraction ~	D1 inches	Tol. inches	H inches	Tol. inches	t inches	Tol. inches			n ₁ (min)
1465-9	.091	.097	3/32	.326		.029	±.005	.010		.058	0.15	27
1465-12	.121	.129	1/8	.366		.029		.010		.058	0.20	38
1465-15	.152	.160	5/32	.397		.043	±.009	.010		.058	0.22	45
1465-18	.184	.192	3/16	.444	±.005	.031	±.007	.010	±.001	.062	0.26	55
1465-25	.246	.254	1/4	.522		.037		.010		.074	0.39	58
1465-31	.308	.316	5/16	.584		.037	±.008	.010		.074	0.44	60
1465-37	.371	.379	3/8	.645		.037		.010		.074	0.48	65
1465-43	.432	.442	7/16	.737		.045	±.009	.015		.090	0.97	120
1465-50	.495	.505	1/2	.828		.054		.015		.108	0.74	120
1465-56	.557	.567	9/16	.889		.054		.015		.108	1.39	125
1465-62	.620	.630	5/8	.951	±.010	.054		.015	±.002	.108	1.47	135
1465-75	.745	.755	3/4	1.076		.054	±.010	.015		.108	1.65	140
1465-87	.870	.880	7/8	1.203		.054		.015		.108	1.96	140
1465-100	.995	1.005	1	1.327		.054		.015		.108	2.23	140

