

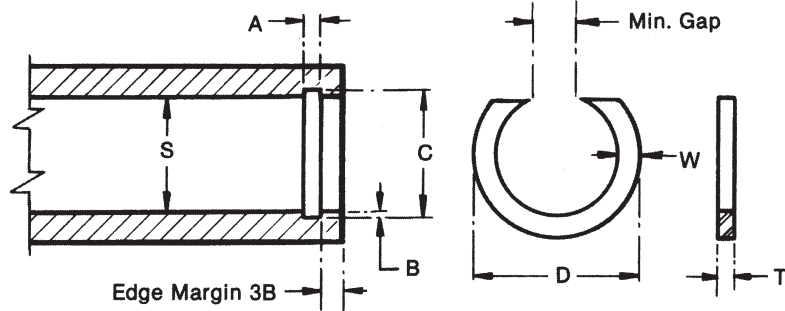
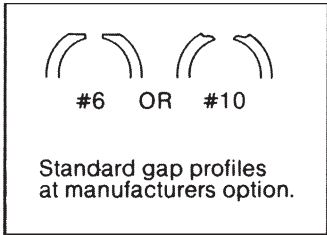


ND

**INTERNAL
RETAINING
RINGS**

**Applicable Housing
1.125" to 8.000"**

Standard Material
Carbon Spring Steel



Material Steel SAE 1060 to 1075 Hardness R/C42-52

PART NUMBER	HOUSING			RING				GROOVE			FREE GAP		RING THRUST CAPACITY Lbs.	
	DIAMETER S			FREE DIAMETER		WIRE SECTION		DIA.		WIDTH A	NOM. DEPTH B	MIN.		MAX.
	Frac. inch	Dec. inch	mm	D inches	Tol. inches	W ±.005	T ±.002	C	Tol.					
ND112	1 1/8	1.125	28.58	1.196		.093		1.181			.028			1100
ND125	1 1/4	1.250	31.75	1.330	+.031	±.003		1.310			.030	.375	.562	1360
ND137	1 3/8	1.375	34.93	1.460	-.000			1.435						1600
ND150	1 1/2	1.500	38.10	1.600		.125		1.580	±.005					1900
ND162	1 5/8	1.625	41.28	1.725		±.005		1.705			.040			1930
NDI75	1 3/4	1.750	44.45	1.855				1.830		.046				1960
ND187	1 7/8	1.875	47.63	1.990			.042	1.965		+.003 -.000				2090
ND200	2	2.000	50.80	2.115	+.062			2.090						2200
ND206	2 1/16	2.062	52.37	2.177	-.000	.156		2.152				.437	.750	2340
ND218	2 3/16	2.187	55.55	2.302		±.005		2.277			.045			2700
ND231	2 5/16	2.312	58.72	2.432				2.402						2900
ND243	2 7/16	2.437	61.90	2.557				2.527						3000
ND256	2 9/16	2.562	65.07	2.682				2.652						3200
ND300	3	3.000	76.20	3.154				3.124						6250
ND325	3 1/4	3.250	82.55	3.404	+.078	.187		3.374	±.006	.068				6500
ND350	3 1/2	3.500	88.90	3.654	-.000	±.005	.062	3.624		+.004 -.000	.062	.562	.938	6700
ND375	3 3/4	3.750	95.25	3.904				3.874						6100
ND400	4	4.000	101.60	4.155				4.125						7000
ND425	4 1/4	4.250	107.95	4.429				4.394						9100
ND450	4 1/2	4.500	114.30	4.679				4.644						9400
ND475	4 3/4	4.750	120.65	4.929	+.093	.218	.078	4.894		.086	.072	.625	1.062	9200
ND500	5	5.000	127.00	5.184	-.000	±.005		5.144		+.005 -.000				9000
ND525	5 1/4	5.250	133.35	5.434				5.394						8800
ND575	5 3/4	5.750	146.05	5.934				5.894	±.007					8950
ND600	6	6.000	152.40	6.220				6.160						9000
ND650	6 1/2	6.500	165.10	6.730	-.000			6.660				.875	1.437	7500
ND700	7	7.000	177.80	7.240		.250	.093	7.160		.103	.080			6200
ND725	7 1/4	7.250	184.15	7.500	+.187	±.005		7.410	±.008	+.005 -.000		1.000	1.750	6100
ND750	7 1/2	7.500	190.50	7.760	-.000			7.660						6000
ND800	8	8.000	203.20	8.285				8.160						5700